

# The Value of Enrichment

Naomi Webster – Training and Conferences Manager, BCT

Opportunity to learn from zoos as zoo animals are comparable with long-term captive bats (enrichment is not relevant for short-term captives)

## Environmental Enrichment

- Enrichment is a dynamic process for enhancing animal environments within the context of the animals' behavioral biology and natural history. Environmental changes are made with the goal of increasing the animal's behavioral choices and drawing out their species-appropriate behaviors, thus enhancing animal welfare

1999 AZA Behavior Scientific Advisory Group

## Animal Welfare Measures

Five Freedoms:

- *Freedom from hunger and thirst*
- *Freedom from discomfort*
- *Freedom from pain, injury or disease*
- *Freedom to express normal behaviour*
- *Freedom from fear and distress*

Originally developed for the farm animals. Can also consider five further freedoms suggested by Jon Coe:

- *Freedom to Achieve Competence:*
- *Freedom to Have Choice:*
- *Freedom to Take Control:*
- *Freedom to Experience Variety*
- *Freedom to Engage Complexity*

[www.zoolex.org/publication/coe/2017 Environmental Enrichment for Designers.pdf](http://www.zoolex.org/publication/coe/2017%20Environmental%20Enrichment%20for%20Designers.pdf)

British and Irish Association of Zoos and Aquaria consider the following measures of animal welfare:

- *Physical health*
- *Mental health*
- *Social life*
- *Enclosure design*
- *Environmental enrichment*

[www.biaza.org.uk/animal-welfare](http://www.biaza.org.uk/animal-welfare)

## How it can help

A veterinary assessment of the risks and benefits of environmental enrichment A Duncan, 1997 [www.enrichment.org/MiniWebs/About EE/duncan 1997.pdf](http://www.enrichment.org/MiniWebs/About%20EE/duncan%201997.pdf)

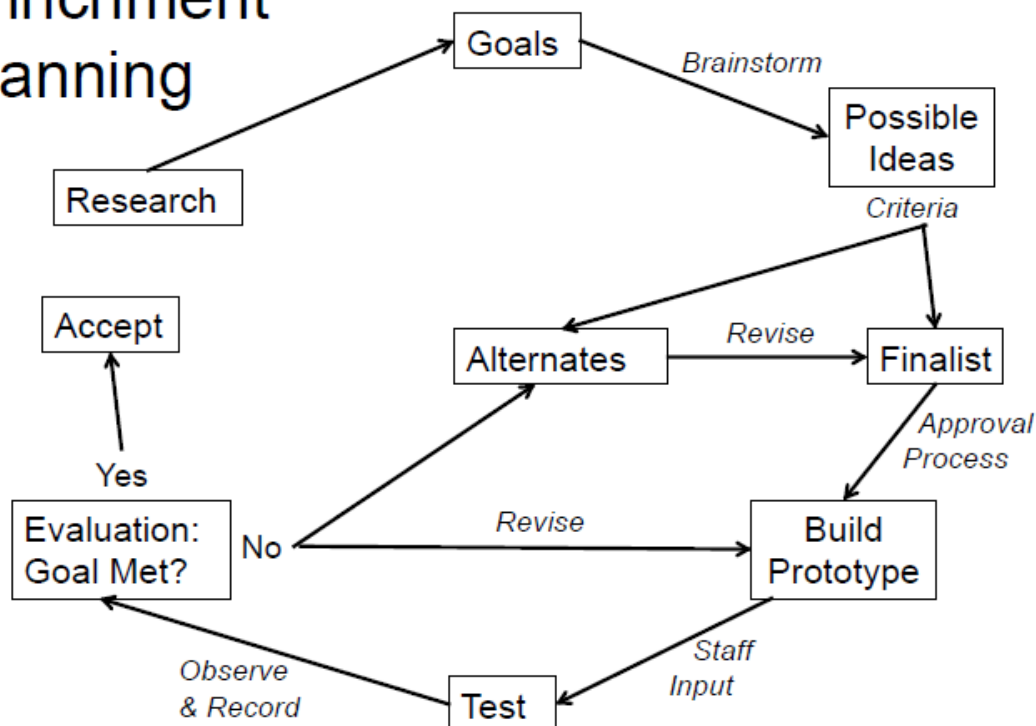
## Planning Enrichment

BIAZA partner – The Shape of Enrichment

- Environmental enrichment plans should be:
  - Holistic - considering all aspects of an animal's environment: Social, Cognitive, Physical, Sensory, and Food
  - Goal-driven (general or specific, result in one or many forms of enrichment to achieve goal)
  - Assessed (initially and periodically, where necessary modified)

[http://www.enrichment.org/MiniWebs/About\\_EE/planning\\_chart.pdf](http://www.enrichment.org/MiniWebs/About_EE/planning_chart.pdf)

## Enrichment Planning



©2011, The Shape of Enrichment, Inc.

## SPIDER approach

<http://www.animalenrichment.org/spider/>

- Setting goals
- Planning
- Implementation
- Documentation
- Evaluation
- Re-adjustment

## Jersey Zoo Bat Enclosure

[www.durrell.org/wildlife/news/best-bat-house-around-world-first-worlds-rarest-bat/](http://www.durrell.org/wildlife/news/best-bat-house-around-world-first-worlds-rarest-bat/)

## Sharing ideas / successes / learning opportunities

<http://www.enrichment.org/Safety.php>

### Welcome to The Shape of Enrichment's Safety Database!

New Database Search

Taxa	Enrichment	Hazard
Mammal: Bat	(all)	(all)

Found 0 entries

By sharing our ideas, successes and learning opportunities we can help each other and improve the welfare of bats in captivity long-term