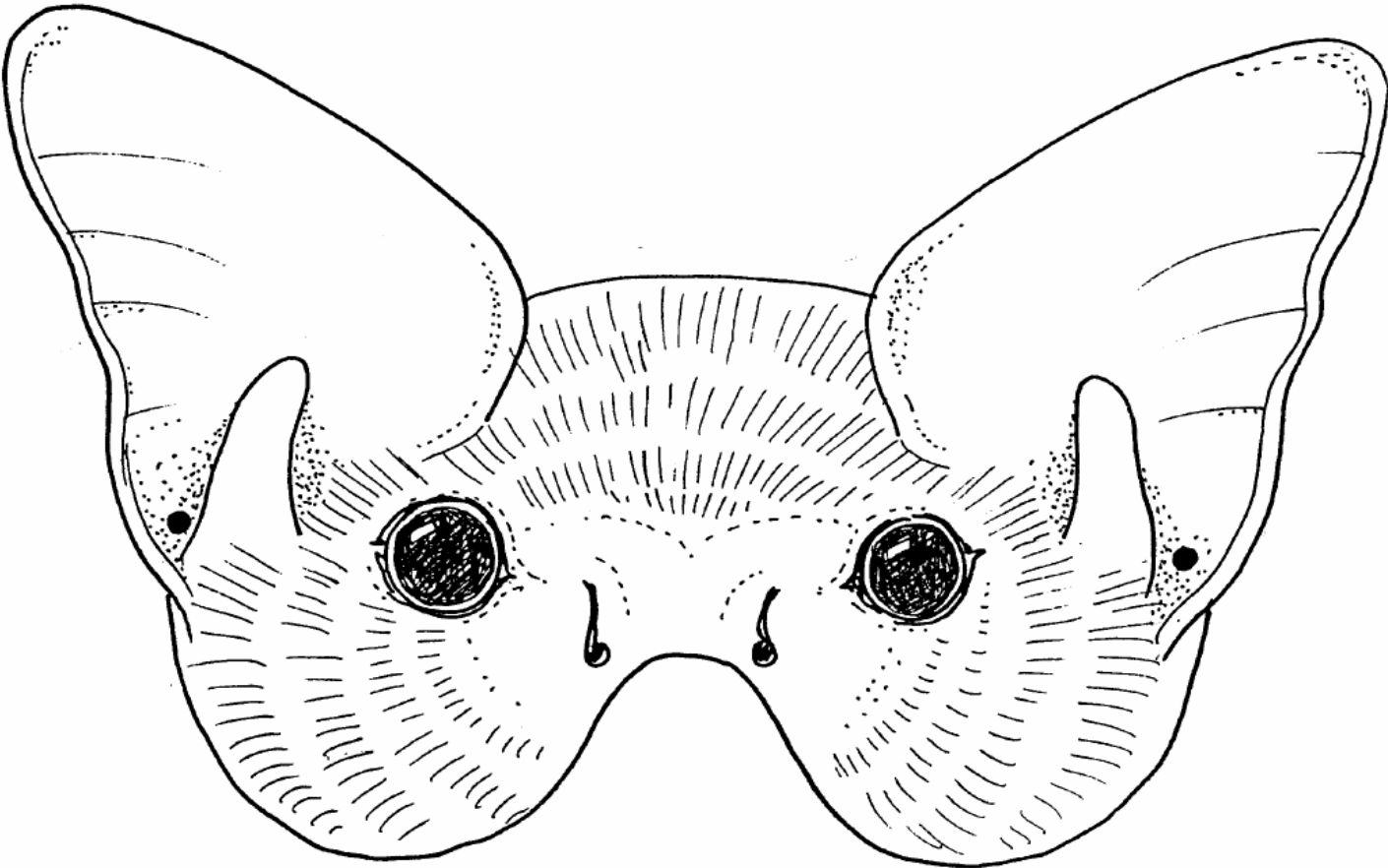




Bat Mask



YOU WILL NEED:

Card

Scissors

Hole punch

Shirring elastic (about 25cm per mask) to go round back of head) or elastic bands to hitch round ears

Colouring materials

METHOD:

Photocopy one per child – they colour carefully, and cut around edges of mask

Help may be needed to cut out eyes and punch holes for elastic

Thread & tie elastic to fit child's head (or send mask + elastic home for adults to complete there!)